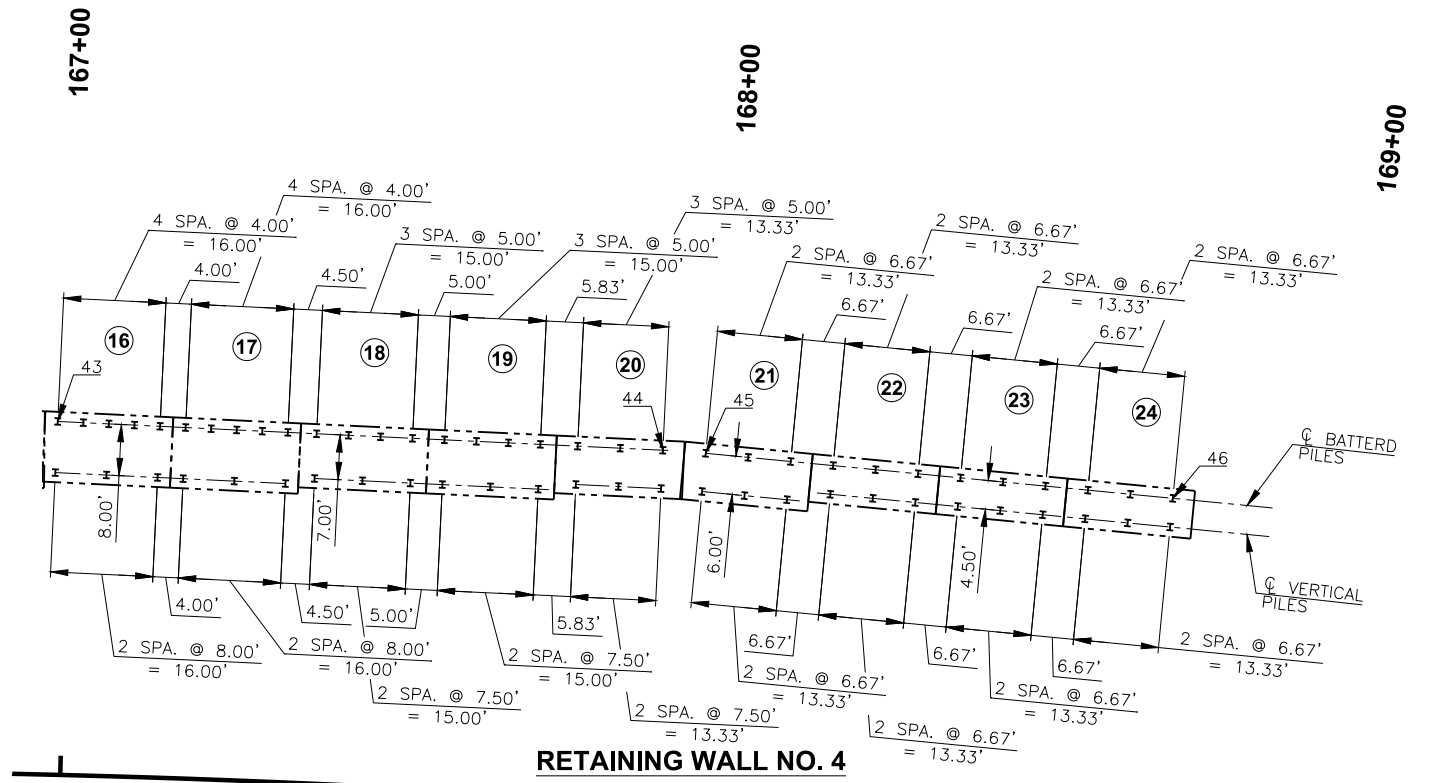


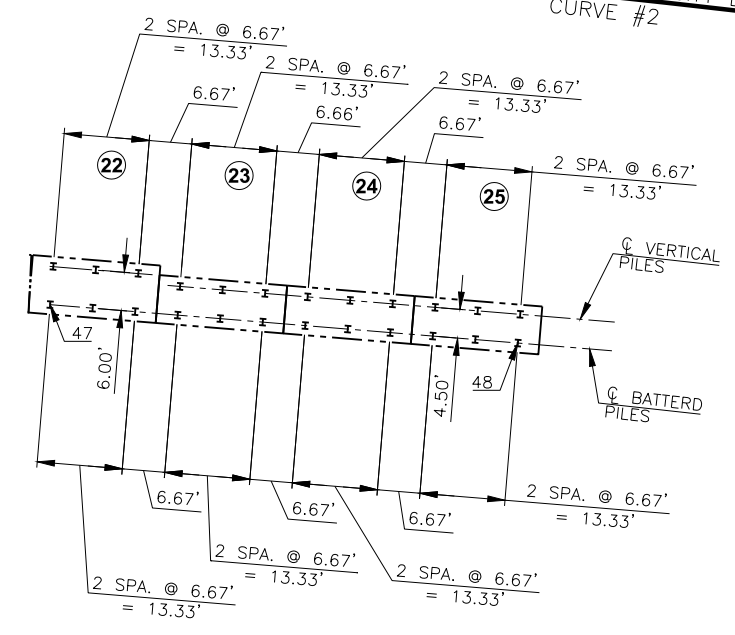
DESCRIPTION	REVISIONS	DATE



POINT	STATION	OFFSET
43	166+98.28	55.20' LT.
44	167+90.40	55.17' LT.
45	167+96.94	55.17' LT.
46	168+68.31	54.82' LT.
47	167+76.05	55.32' RT.
48	168+51.47	55.32' RT.

RETAINING WALL NO. 4

C.R.L. & P.G.L. OKLAHOMA CITY BOULEVARD
CURVE #2



RETAINING WALL NO. 2

RETAINING WALL PILES SHALL BE ORIENTED SUCH THAT THE FACE OF THE WEB IS PERPENDICULAR TO THE FRONT FACE OF THE RETAINING WALL.

DESIGN	B.J.K.	CROSTOWN BOULEVARD EASTBOUND OKLAHOMA COUNTY OVER CLASSEN BLVD. SUBSTRUCTURE LAYOUT RETAINING WALL NO. 2 AND 4 (SHEET 2 OF 2) JOB PIECE NO. 17428(88) SHEET NO. 130
DRAWN	R.A.P.	
CHECKED	B.J.K.	
APPROV.	T.A.C.	
SQUAD	CEC	